

Photoshop 5.0 makes selections more easy with the magnetic lasso tool; gives you more power when working with the type tool; and makes simple layer effects a one-step process.

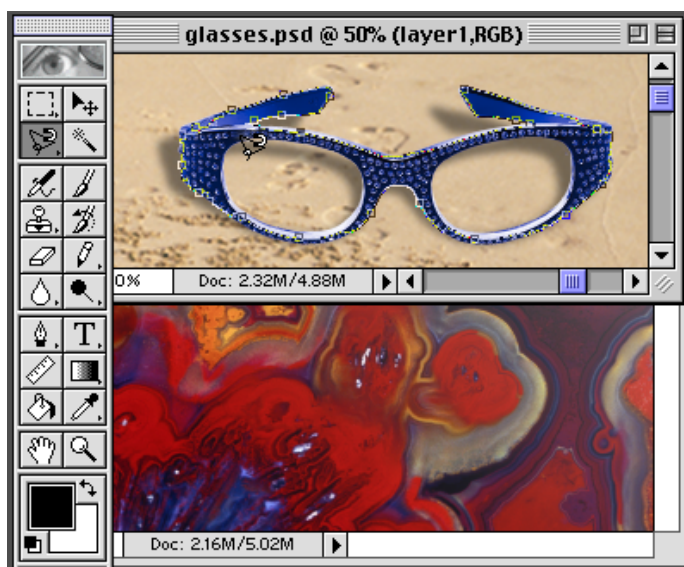


Adobe Senior Designer
Lisa Jeans Trail
shows the basics of
three new features in
Adobe® Photoshop® 5.0.
BEGINNER



Three New Features Overview

1. Open an image in Adobe Photoshop that has an object to select. From the Tool palette select the magnetic lasso tool, found under the lasso tool. Click once and begin dragging near the object; the magnetic lasso tool will distinguish the edges for you. To finish off the selection, place the tool over the starting point and click. Your selection is made.

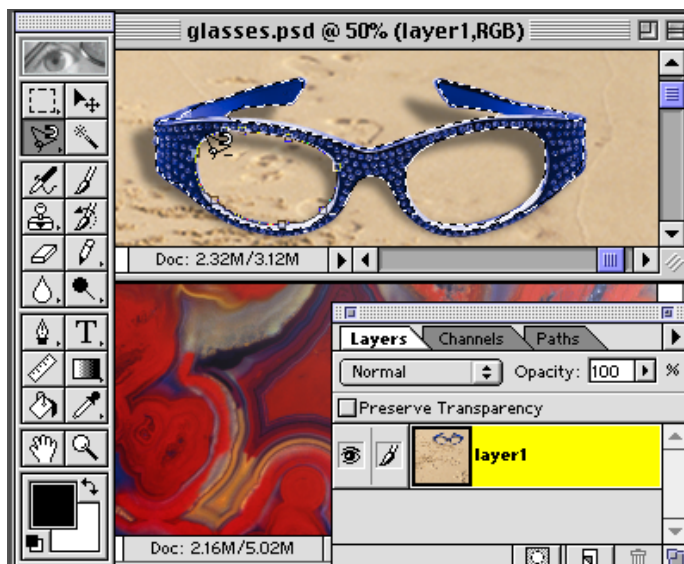


Magnetic lasso

Double-click on the magnetic lasso in the tool box to access its options.

- Lasso width is the distance from the pointer at which the lasso will detect edges.
- Frequency is the rate at which the lasso sets fastening points (a higher value anchors more quickly).
- Edge Contrast is the lasso's sensitivity to edges (a higher value detects high contrast edges).

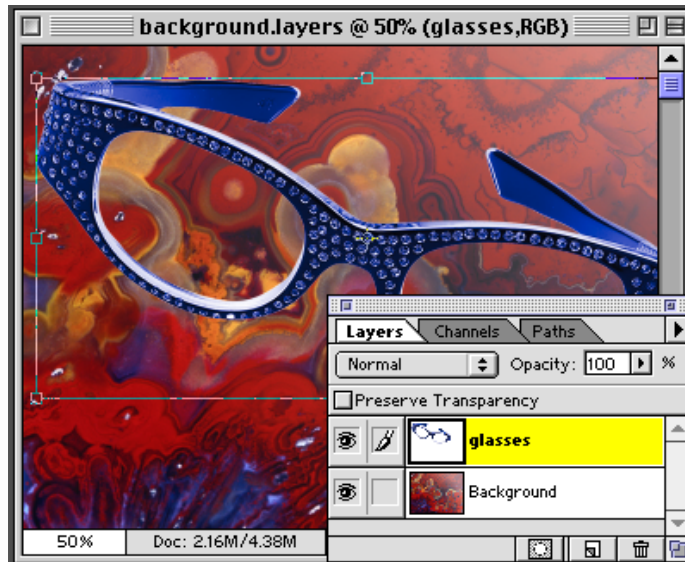
2. To make a selection within a selection, hold down the option key while dragging. With the object selected, hold down the command key or select the move tool and click inside the selection and drag and drop the image onto another file.



Shortcuts

Throughout this document, "Command/Ctrl" means Command on the Macintosh and Ctrl on Windows.

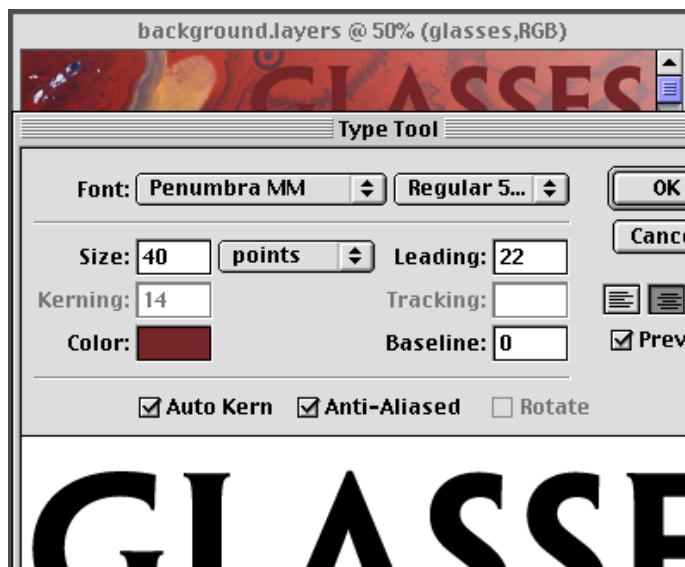
3. The image is placed on a new layer and can now be scaled and rotated using Free Transform (Command/Ctrl+T). Once the image is placed as you would like, press the Return/Enter key to set the transformation.



Transformation

Yet another new feature in version 5.0 is the ability to transform selections found on the Select > Transform Selection menu. This allows you to transform a selection only and not the image underneath.

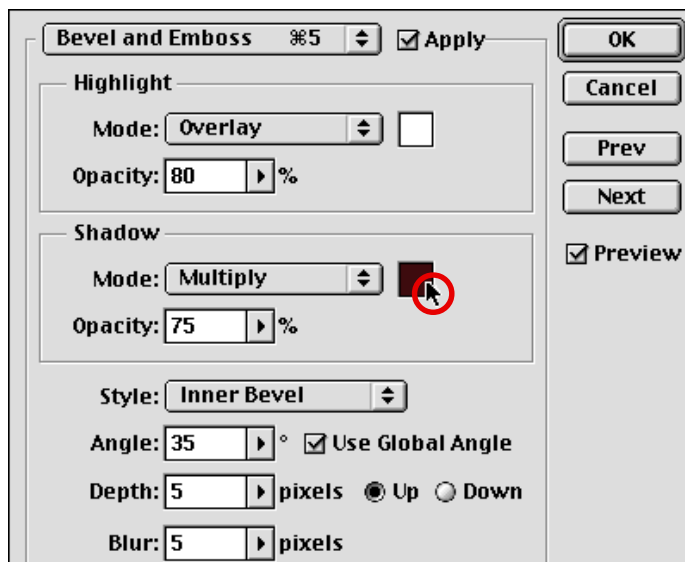
4. Next, let's add text to the image. Select the type tool and click approximately where the text should be placed. Move the dialog box so you can make use of the new Preview option. Notice that you can now highlight part of your text and apply multiple styles and sizes as well as control the leading. You also have the ability to change the color of the text while in the dialog box. Click OK once your text is as you would like it.



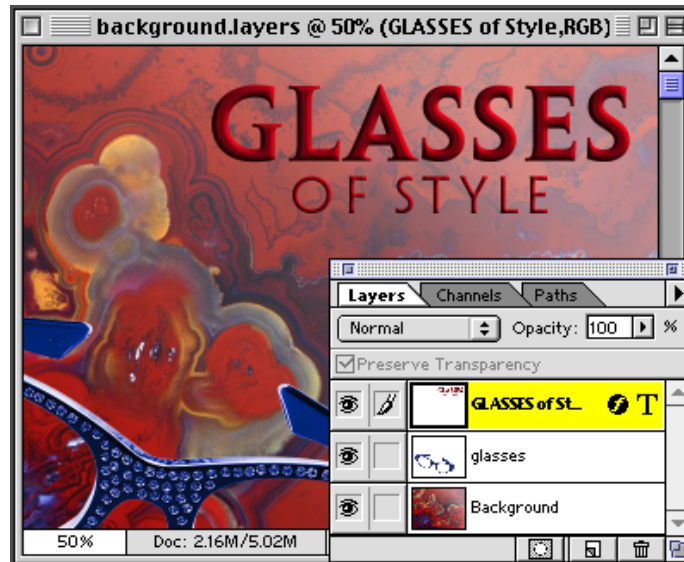
Moving type

While in the Type Tool dialog, you can now click outside the dialog and move our type into position—just one more feature that makes working with type in Photoshop 5.0 that much easier.

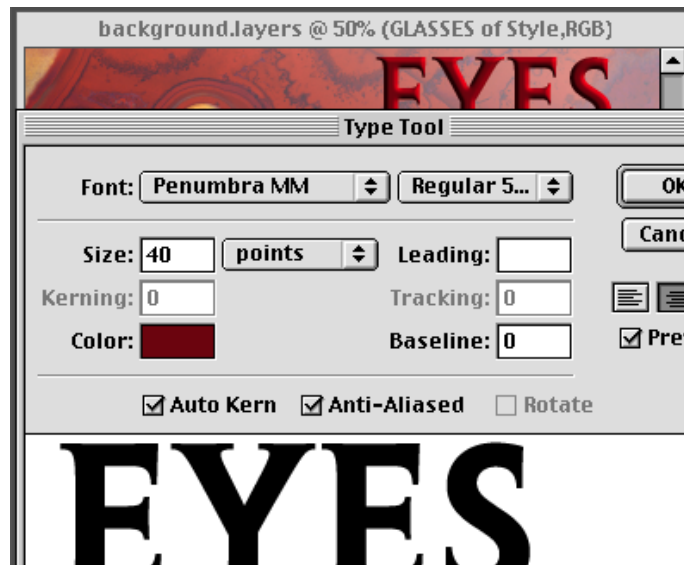
5. You can add some new layer effects with the text layer still selected. Here we are going to add the Bevel and Emboss effect. I've used an Inner Bevel and then tried different mode and opacity settings to achieve the effect I like. I even specified the shadow color by clicking on the color box.



6. Click OK once you have the effect you want.



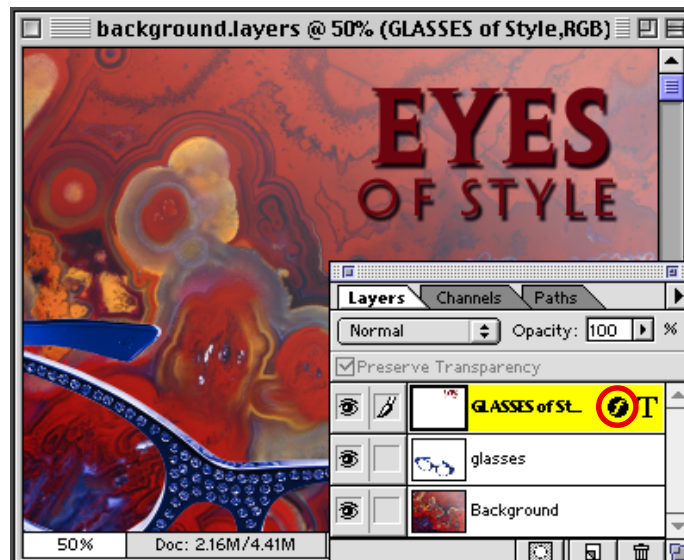
7. Even with an effect added to the text layer, the text is still fully editable. Double-click on the “T” in the text layer to bring up the Type Tool dialog box and make any changes. See how the layer effect is added to your changes.



Copy/paste effects

With the new layer effects you can copy and paste effects between layers. Select a layer with an effect and choose Layer > Effects > Copy Effects. Then select the layer to which you would to add the effect to and choose Layer > Paste Effects.

8. You can also make changes to the layer effect by double-clicking on circle f (the layer effect icon) to the right of the layer name. This brings up the effect dialog box last used on that layer. You can then either make changes to the existing effect or select a new effect from the pop-up menu.



Adobe

Adobe, the Adobe logo, and Photoshop are trademarks of Adobe Systems Incorporated. Macintosh is a trademark of Apple Computer, Inc. registered in the U.S. and other countries. Windows is a either a registered trademark or trademark of Microsoft in the U.S. and/or other countries.

©1998 Adobe Systems Incorporated. All rights reserved.

Photo Credit © PhotoGear, ObjectGear